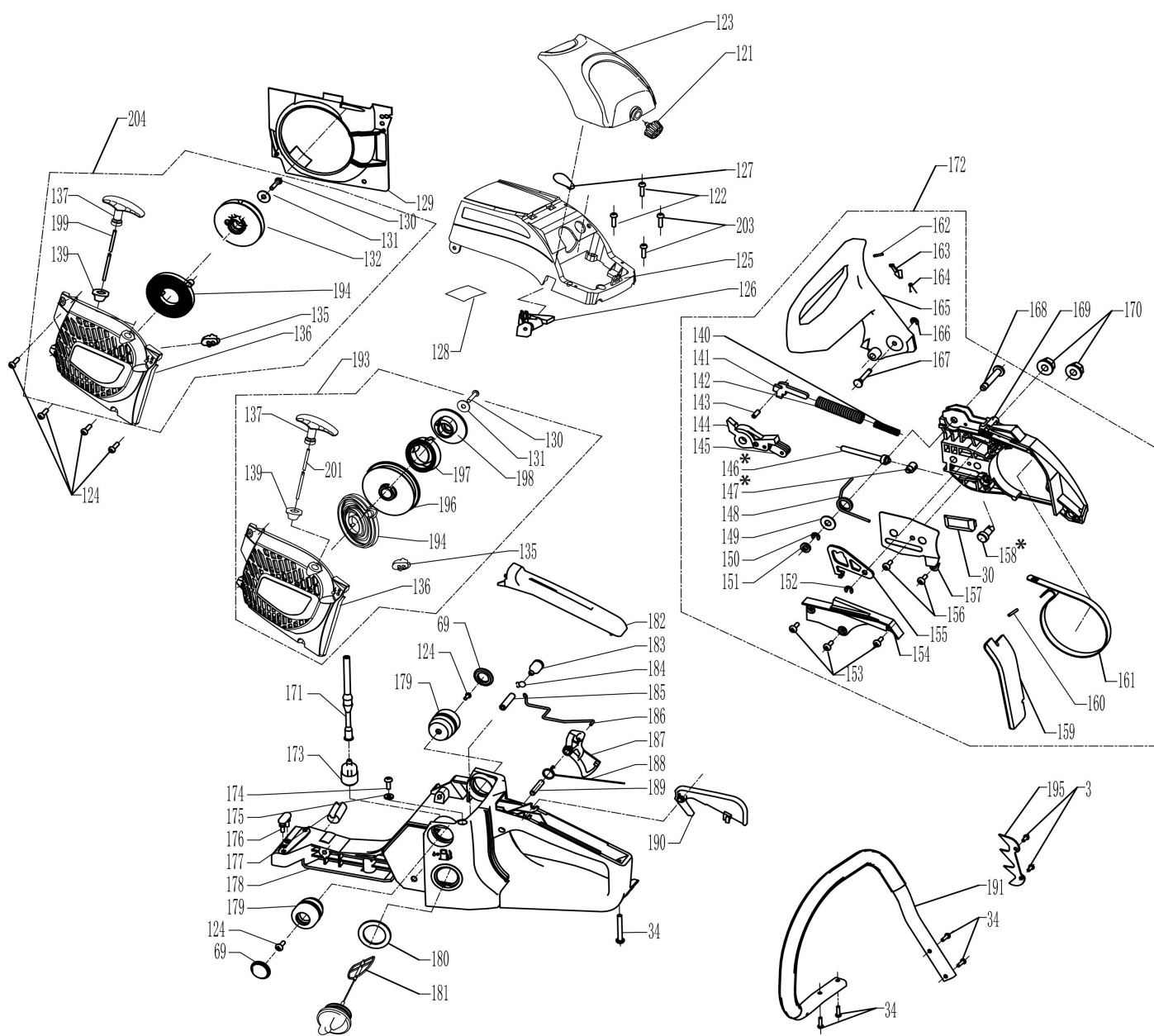


| № | Артикул | Наименование | Кол-во |
|------|--------------------|---|--------|
| 1 | 5.02.01.05001EVO | MUFFLER NUT | 2 |
| 2 | 4.006.0031.01EVO | SPACER PLATE | 1 |
| 3 | 5.01.06.0512121EVO | SCREW | 7 |
| 4 | 4.006.0012.05EVO | MUFFLER(4620/5020) | 1 |
| 5 | 4.019.0031.02EVO | GASKET(4620/5020) | 1 |
| 6 | 5.01.16.05871EVO | MUFFLER BOLT | 2 |
| 7 | 5.01.07.05221EVO | SCREW | 4 |
| 8 | 4.002.0011.05EVO | CYLINDER Ф45 (5020) | 1 |
| 9 | 4.009.0041.05EVO | SPARK PLUG (L7T) | 1 |
| 10 | 4.019.0041.01EVO | PIPE GASKET | 1 |
| 11 | 4.005.0023.03EVO | INLET PIPE | 1 |
| 12 | 4.005.0041.01EVO | INLET PIPE GUIDE | 1 |
| 13 | 4.019.0021.02EVO | CYLINDER GASKET | 1 |
| 14 | 4.004.0041.16EVO | CIRCLIP | 2 |
| 15 | 4.004.0031.16EVO | PISTON PIN Ф11X35.5 (5020/5420) | 1 |
| 16 | 4.004.0051.01EVO | WASHER Ф18X3.1(5020/5420) | 2 |
| 17 | 4.004.0021.03EVO | PISTON RING Ф45 (5020) | 2 |
| 18 | 4.004.0013.22EVO | PISTON Ф45 (5020) | 1 |
| 19 | 5.08.08.11121EVO | NEEDLE BEARING | 1 |
| 20 | 4.003.0012.04EVO | CRANKSHAFT COMP (4620/5020) | 1 |
| 21 | 5.06.01.03101EVO | WOODRUFF KEY | 1 |
| 22 | 5.01.06.04151EVO | SCREW | 2 |
| 23 | 4.014.0051.02EVO | OIL PUMP PIPE(O) | 1 |
| 24 | 4.014.0012.11EVO | OIL PUMP ASS'Y | 1 |
| 25 | 4.014.0161.02EVO | SEALED SPONGE | 1 |
| 26 | 4.014.0041.02EVO | OIL PUMP PIPE(I) | 1 |
| 27 | 4.014.0022.02EVO | OIL FILTER ASS'Y | 1 |
| 28 | 5.01.06.04061EVO | SCREW | 3 |
| 29 | 4.014.0081.01EVO | OIL GUIDE PLATE | 1 |
| 30 | 3.001.0461.01EVO | CHAIN GUIDE | 2 |
| 31 | 5.03.03.08261EVO | STUD | 2 |
| 32 | 5.01.16.05141EVO | SCREW | 1 |
| 33 | 3.001.0641.04EVO | CHAIN CATCHER | 1 |
| 34 | 5.01.05.48162EVO | SCREW | 9 |
| 35 | 3.001.0641.03EVO | SPRING SEAT | 1 |
| 36 | 4.013.0011.03EVO | SPRING | 1 |
| 37 | 4.014.0151.01EVO | CIRCLIP | 1 |
| 38 | 4.014.0161.01EVO | SPONGE | 1 |
| 39 | 4.014.0101.01EVO | BREATHER VALVE | 1 |
| 40 | 4.010.0021.02EVO | WEDGE BRACKET | 1 |
| 41 | 4.010.0011.02EVO | CLUTCH WEDGE | 3 |
| 42 | 4.010.0031.02EVO | CLUTCH SPRING | 1 |
| 43 | 4.010.0051.02EVO | CLUTCH WASHER | 1 |
| 44 | 5.08.08.12151EVO | NEEDLE BEARING | 1 |
| 45 | 4.010.0043.14EVO | CLUTCH DRUM | 1 |
| 46 | 4.010.0071.09EVO | SPROCKET 3/8-7 | 1 |
| 47 | 4.014.0063.02EVO | OIL PUMP WORM | 1 |
| 48 | 5.01.06.04101EVO | SCREW | 3 |
| 49 | 4.014.0023.01EVO | OIL PUMP COVER | 1 |
| 50 | 5.09.02.15281EVO | OIL SEAL(R) | 1 |
| 51 | 5.08.01.15351EVO | BALL BEARING | 2 |
| 52 | 4.013.0021.13EVO | CHOKE ROD DAMPER | 1 |
| 53 | 4.001.0041.20EVO | RIGHT CRANKCASE | 1 |
| 54 | 4.008.0041.01EVO | CHOKE ROD GUIDE | 1 |
| 55 | 3.001.0343.08EVO | CHOKE KNOB | 1 |
| 56 | 4.005.0151.02EVO | UNDER MAT | 1 |
| 57 | 5.01.04.05141EVO | SCREW | 2 |
| 58 | 4.005.0191.02EVO | CARBURETOR BRACKET | 1 |
| 59 | 4.005.0151.01EVO | SPACER | 1 |
| 60 | 4.019.0051.01EVO | INSULATION GASKET | 1 |
| 61.1 | 4.017.0013.23EVO | CARBURETOR (4620/5020) | 1 |
| 62 | 5.01.07.05501EVO | SCREW | 2 |
| 63 | 4.005.0033.01EVO | AIR INLET CURVING PIPE | 1 |
| 64 | 4.005.0141.01EVO | DAMPER | 1 |
| 66 | 5.11.02.20201EVO | O RING | 1 |
| 67 | 4.005.0012.08EVO | AIR FILTER COMP | 1 |
| 69 | 4.013.0031.05EVO | DAMPER CAP | 5 |
| 70 | 4.013.0021.10EVO | DAMPER | 3 |
| 71 | 4.018.0021.08EVO | DUST SHIELD | 1 |
| 72 | 4.009.0081.01EVO | SWITCH COVER | 1 |
| 73 | 4.009.0051.02EVO | SWITCH(ON/OFF) | 1 |
| 74 | 4.009.0061.01EVO | GROUND PLATE | 1 |
| 75 | 4.018.0021.01EVO | GUIDE(LH) | 1 |
| 76 | 4.001.0051.02EVO | STOP PIN | 2 |
| 77 | 4.019.0011.02EVO | CRANKCASE GASKET | 1 |
| 78 | 4.007.0051.04EVO | CLIP | 2 |
| 79 | 4.007.0041.03EVO | VACUUM PIPE | 1 |
| 80 | 4.007.0063.01EVO | TUBE JOINTS | 1 |
| 81 | 4.001.0021.19EVO | LEFT CRANKCASE | 1 |
| 82 | 4.009.0071.02EVO | SPARK PLUG COVER | 1 |
| 83 | 4.009.0023.26EVO | IGNITION ASS'Y | 1 |
| 84 | 4.009.0031.02EVO | FLAMEOUT CORD | 1 |
| 85 | 5.01.07.05201EVO | SCREW | 2 |
| 86 | 4.014.0091.01EVO | OIL TANK CAP GASKET | 1 |
| 87 | 3.001.0252.02EVO | OIL TANK CAP COMP | 1 |
| 88 | 5.01.06.05251EVO | SCREW | 5 |
| 89 | 5.02.10.08011EVO | NUT | 1 |
| 90 | 3.001.0323.02EVO | LOCK NUT | 1 |
| 91 | 4.009.0012.08EVO | FLYWHEEL ASS'Y (METAL PAWL) | 1 |
| 92 | 5.01.16.06001EVO | SHOULDER SCREW | 2 |
| 93 | 4.012.0051.06EVO | PAWL | 2 |
| 94 | 4.012.0061.06EVO | SPRING | 2 |
| 95 | 4.018.0081.01EVO | PLATE | 1 |
| 96 | 5.09.02.15351EVO | OIL SEAL(L) | 1 |
| 97 | 5.07.02.35001EVO | SNAP RING | 1 |
| * | 3.002.0030.20EVO | Short Block CSG 50 | 1 |
| ** | 3.002.0030.201EVO | Cylinder-piston group (8.13.14.15.17.18,19) | 1 |
| *** | 3.002.0010.02EVO | Clutch assembly (40,41,42) | 1 |



| № | Артикул | Наименование | Кол-во |
|-----|-------------------|--|--------|
| 121 | 3.001.0323.01EVO | LOCK PIN | 1 |
| 122 | 5.01.06.04151EVO | SCREW | 2 |
| 123 | 3.001.0101.10EVO | AIR FILTER COVER COMP | 1 |
| 124 | 5.01.04.05141EVO | SCREW | 6 |
| 125 | 3.001.0093.03EVO | CYLINDER TOP COVER | 1 |
| 126 | 4.018.0021.04EVO | GUIDE(T) | 1 |
| 127 | 3.001.0381.01EVO | HOT WIND COVER | 1 |
| 128 | 4.018.0041.02EVO | HEAT SHIELD | 1 |
| 129 | 3.001.0141.09EVO | FAN COVER | 1 |
| 130 | 5.01.13.05141EVO | SCREW | 1 |
| 131 | 5.05.01.05161EVO | REEL WASHER | 1 |
| 132 | 4.012.0151.10EVO | STARTER REEL | 1 |
| 135 | 4.018.0021.15EVO | GUIDE(LH1) | 1 |
| 136 | 3.001.0133.44EVO | STARTER COVER COMP | 1 |
| 137 | 3.001.0241.05EVO | STARTER KNOB | 1 |
| 138 | 4.012.0031.02EVO | NYLON ROPE | 1 |
| 139 | 4.504.0011.01EVO | ROPE GUIDE | 1 |
| 140 | 4.011.0021.01EVO | BRAKE SPRING(SUB) | 1 |
| 141 | 4.011.0041.08EVO | BRAKE ARM | 1 |
| 142 | 4.011.0011.02EVO | BRAKE SPRING(MAIN) | 1 |
| 143 | 4.011.0141.05EVO | GUIDE PIN SLEEVE | 1 |
| 144 | 4.015.0041.06EVO | MAIN LEVER | 1 |
| 145 | 4.011.0041.07EVO | SUB LEVER | 1 |
| 146 | 4.015.0021.02EVO | TENSIONER PASSIVE BOLT | 1 |
| 147 | 4.015.0041.02EVO | TENSIONER PIN | 1 |
| 148 | 4.011.0061.01EVO | BRAKE SPRING | 1 |
| 149 | 5.05.01.06181EVO | PLATE WASHER | 1 |
| 150 | 5.07.03.04001EVO | SNAP RING | 1 |
| 151 | 4.011.0081.01EVO | RUBBER WASHER | 1 |
| 152 | 5.07.03.03011EVO | SNAP RING | 1 |
| 153 | 5.01.02.42092EVO | SCREW | 3 |
| 154 | 3.001.0151.02EVO | BRAKE SPRING COVER | 1 |
| 155 | 4.01.10091.01EVO | STOPPER PLATE | 1 |
| 156 | 5.01.02.42652EVO | SCREW | 2 |
| 157 | 4.015.0131.01EVO | TENSION PLATE | 1 |
| 158 | 4.015.0011.02EVO | CHAIN TENSION ADJUSTER | 1 |
| 159 | 4.018.0021.31EVO | SAWDUST PROTECTOR | 1 |
| 160 | 5.04.01.03091EVO | PIN | 3 |
| 161 | 4.011.0031.08EVO | BRAKE BAND | 1 |
| 162 | 5.04.02.04221EVO | PIN | 1 |
| 163 | 4.011.0111.01EVO | HOOK | 1 |
| 164 | 4.011.0101.01EVO | TORSIONAL SPRING | 1 |
| 165 | 3.001.0361.03EVO | FRONT HAND GUARD | 1 |
| 166 | 5.07.03.03001EVO | SNAP RING | 1 |
| 167 | 4.011.0051.03EVO | STOP PIN | 1 |
| 168 | 4.011.0051.01EVO | GUIDE PIN | 1 |
| 169 | 3001011307EVO | CLUTCH COVER | 1 |
| 170 | 5.02.05.08001EVO | NUT | 2 |
| 171 | 4.007.0041.08EVO | FUEL PIPE | 1 |
| 172 | 3.002.0002.05EVO | CLUTCH COVER ASS'Y | 1 |
| 173 | 4.007.0012.01EVO | FUEL FILTER ASS'Y | 1 |
| 174 | 5.01.03.39141EVO | SCREW | 1 |
| 175 | 4.019.0071.01EVO | FUEL BREATHER GASKET | 1 |
| 176 | 4.013.0021.11EVO | DAMPER | 1 |
| 177 | 3.001.0391.02EVO | DAMPER PLUG | 1 |
| 178 | 3.001.0043.02EVO | REAR HANDLE ASS'Y | 1 |
| 179 | 4.013.0021.12EVO | DAMPER | 2 |
| 180 | 4.007.0101.02EVO | FUEL TANK CAP WASHER | 1 |
| 181 | 3.001.0272.02EVO | FUEL TANK CAP COMP | 1 |
| 182 | 3.001.0081.03EVO | REAR HANDLE COVER | 1 |
| 183 | 4.007.0022.01EVO | BREATHER ASS'Y | 1 |
| 184 | 4.007.0051.03EVO | CIRCLIP | 2 |
| 185 | 4.007.0041.13EVO | BREATHER PIPE | 1 |
| 186 | 4.008.0031.02EVO | THROTTLE ROD | 1 |
| 187 | 3.001.0201.02EVO | THROTTLE TRIGGER | 1 |
| 188 | 4.008.0021.03EVO | THROTTLE SPRING | 1 |
| 189 | 5.04.02.05241EVO | SPRING PIN | 1 |
| 190 | 3.001.0211.02EVO | THROTTLE INTERLOCK ARM | 1 |
| 191 | 3.001.0191.08EVO | FORHT HANDLE COMP(RUGGED TYPE) | 1 |
| 193 | 3.002.0003.41EVO | STARTER ASS'Y | 1 |
| 194 | 4.012.0012.01EVO | RECOIL SPRING ASS'Y | 1 |
| 195 | 4.000.0111.03EVO | SPIKED BUMPER | 1 |
| 196 | 4.012.0151.16EVO | EASY STARTER REEL | 1 |
| 197 | 4.012.0021.07EVO | SPRING | 1 |
| 198 | 4.012.0101.07EVO | PAWL WHEEL | 1 |
| 199 | 4.012.0031.01EVO | NYLON ROPE | 1 |
| 203 | 5.01.04.05201EVO | SCREW | 2 |
| 204 | 3.002.0003.40EVO | STARTER ASS'Y | 1 |
| * | 3.002.0030.172EVO | Chain tensioner assembly (146,147,158) | 1 |